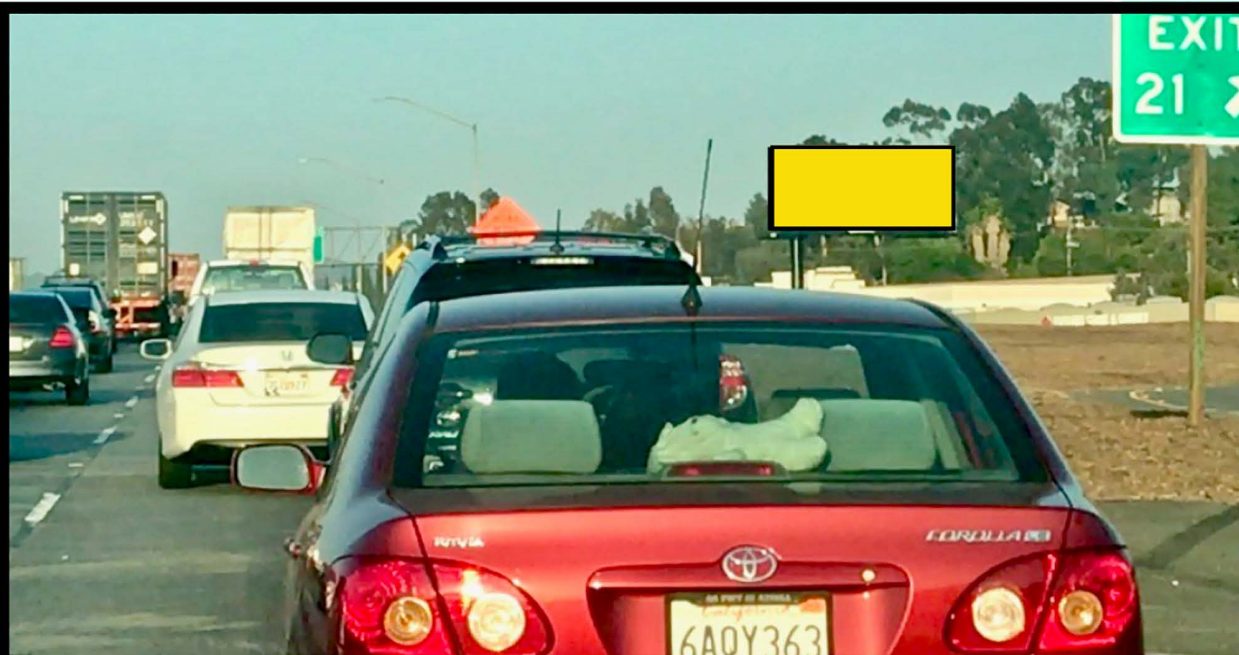


I-60 • City of Industry, CA



This New West Facing Bulletin in Los Angeles County is on the I-60 and reads to motorist headed to Orange County and the Inland Empire. This stand alone bulletin has a super long unobstructed approach. The Pomona Freeway is a very heavily traveled arterial and is a very popular route for commuters. The unit is illuminated with excellent visibility at night with a high EOI.

Orion Unit Number: 6000W

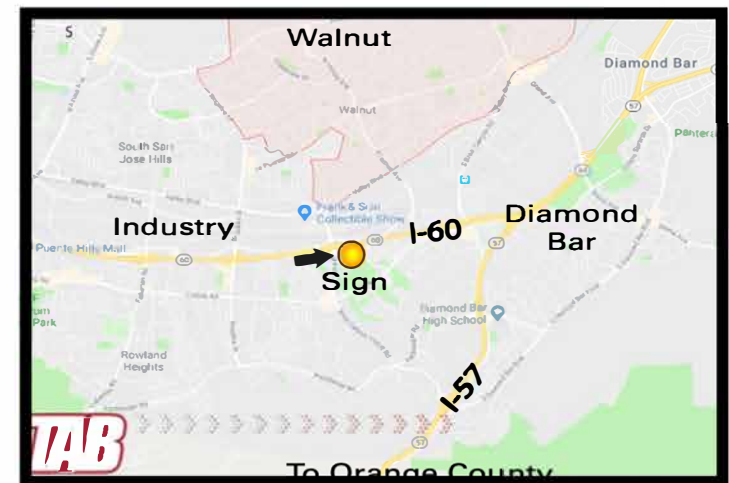
I-60 E/O Fairway Dr.

South Line - West Face

18' x 48' - Illuminated

Geopath EOI Per 7 Days: **1,070,780**

GPS: 33.995933, -117.869141



P.O. Box 6341 • Folsom, CA • 95763-6341 • 1-800-272-3885